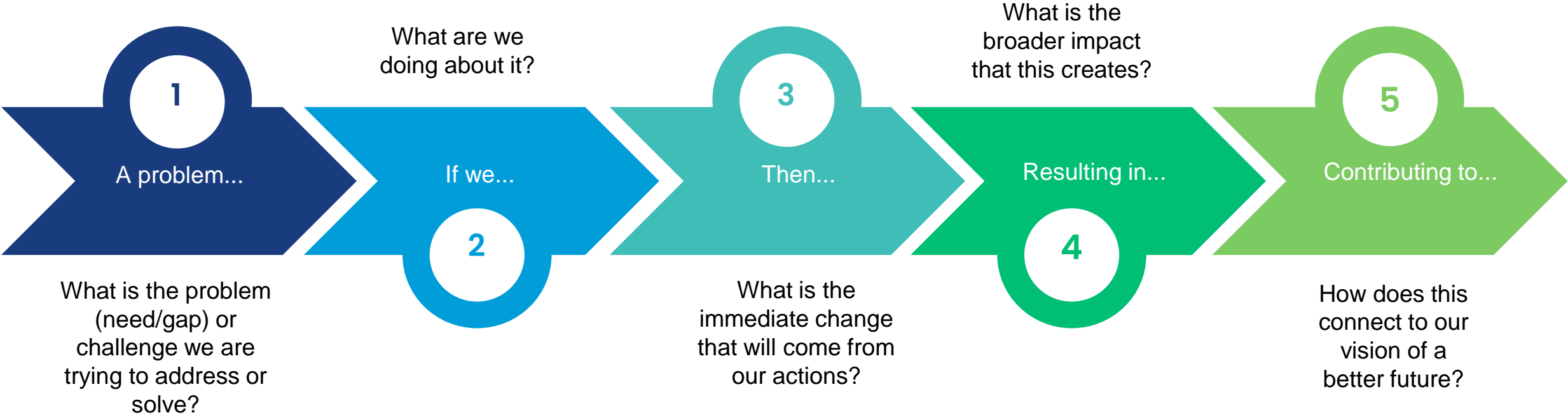


Theory of Change (ToC)



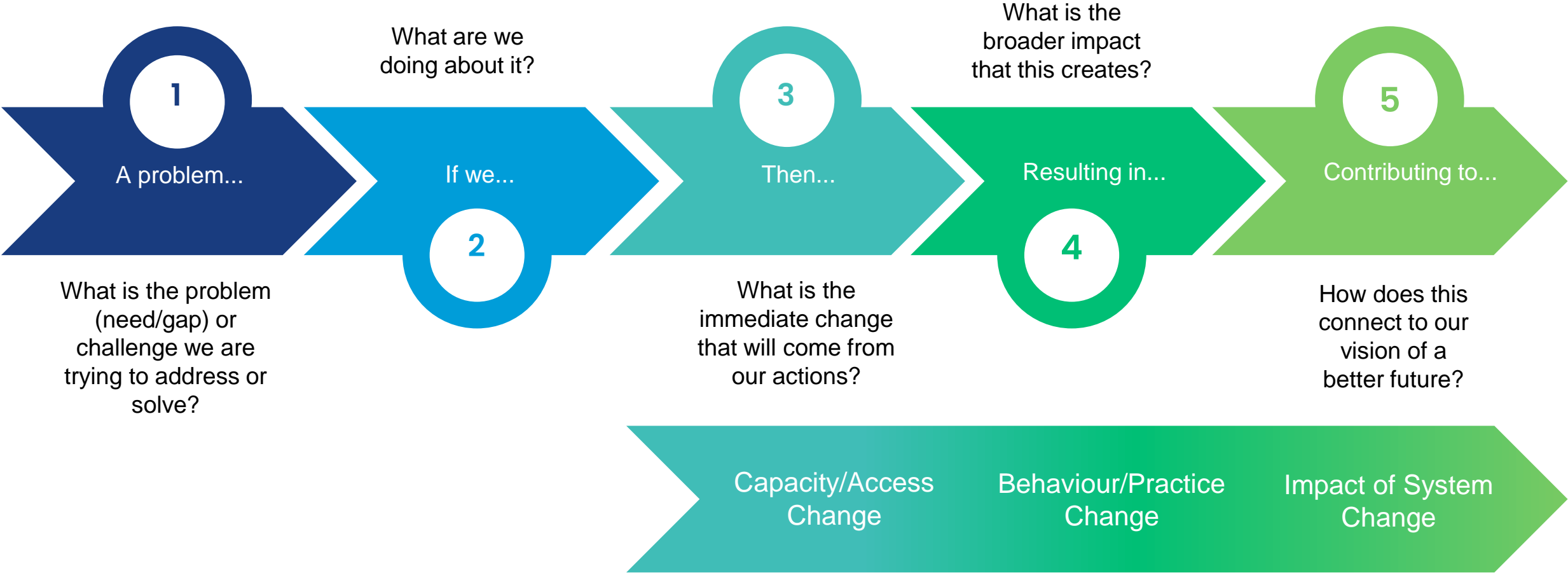
Theory of Change (ToC)

Review
and
Update



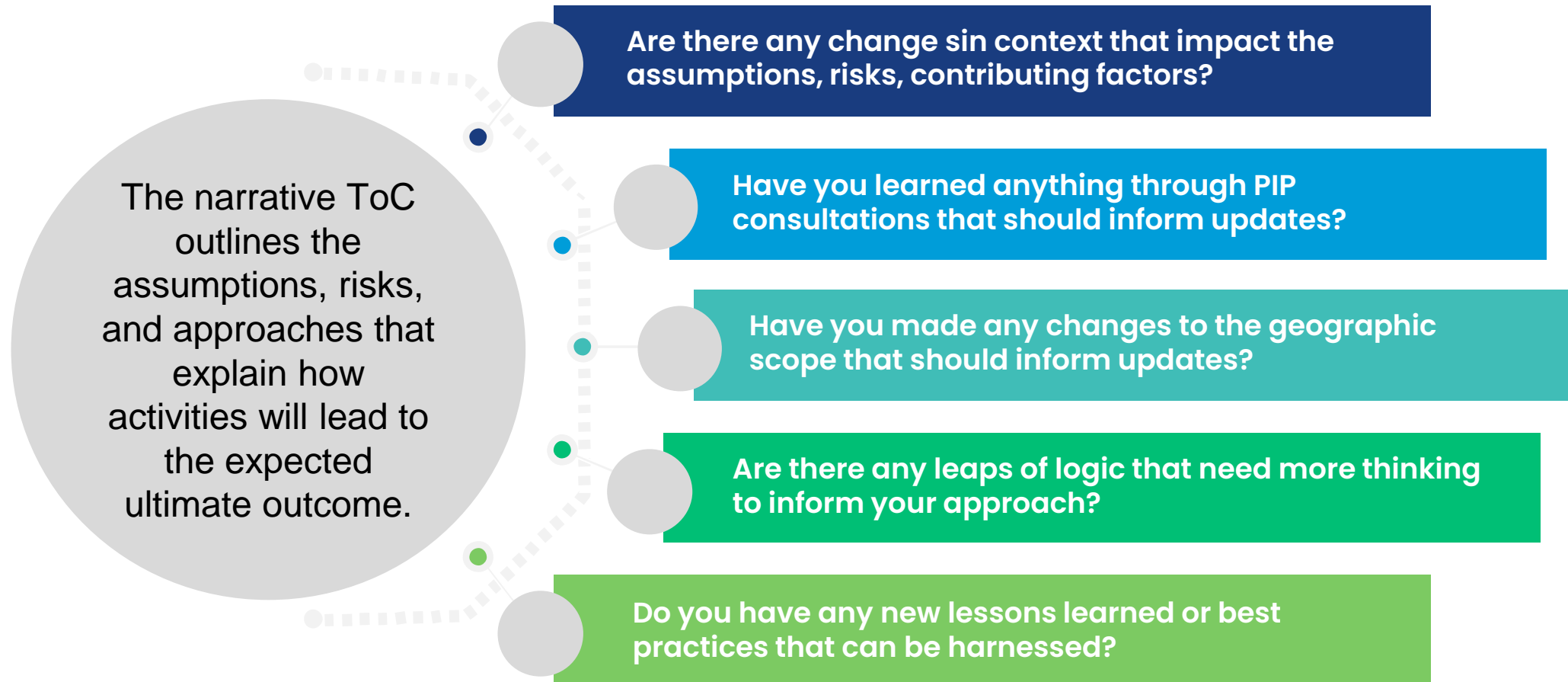
Theory of Change (ToC)

Review
and
Update



Theory of Change (ToC)

Review
and
Update



Logic Model (results chains)

Purpose is to confirm the validity of linkages between outcomes, to assess against new project contexts, and identify implications for other PIP elements.

- **Is it Logical?**
- Is it complete?
- Does it still make sense given changes in context?
- How do considerations from LM review impact other PIP elements?

Do the outputs logically support immediate outcomes?

Do the immediate outcomes logically support the intermediate outcomes?

Are the outcomes reasonably connected to the ultimate outcome?

Logic Model (results chains)

Purpose is to confirm the validity of linkages between outcomes, to assess against new project contexts, and identify implications for other PIP elements.

- Is it Logical?
- **Is it complete?**
- Does it still make sense given changes in context?
- How do considerations from LM review impact other PIP elements?

Are there Gender Equality outcomes?

Is the syntax correct?

Does the language still reflect best practices / common use?

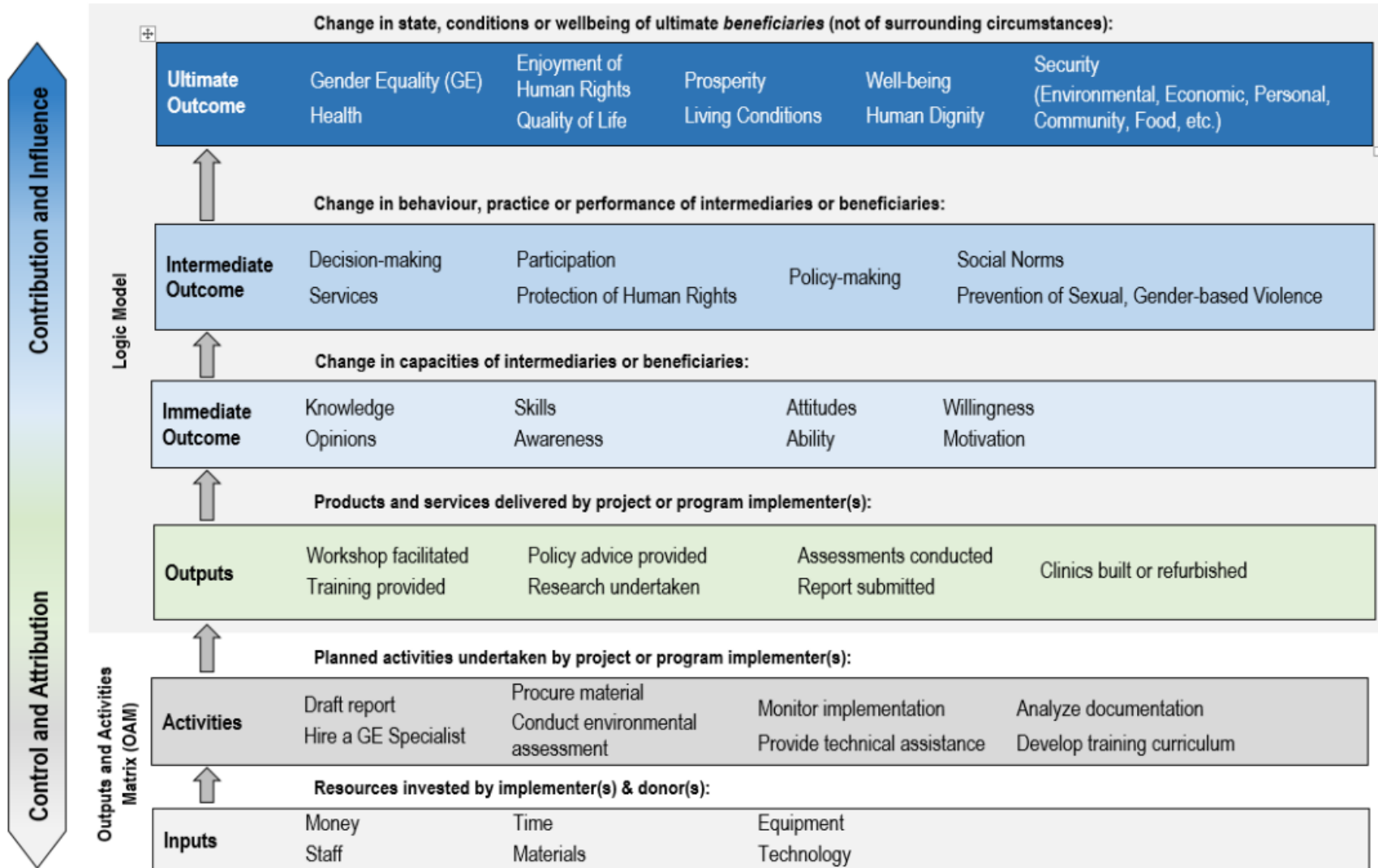
Is the wording understood the same way by all stakeholders?

Are there qualifiers that you may not want to have to measure?
(e.g., 'good quality')?

Are there causal links that should be separated into different outcomes?
E.g. improved access to health care leading to improved health
(Immediate) (Intermediate)

Logic Model (results chains)

Sample Results Chain (Global Affairs Canada)



Logic Model (results chains)

Common Output Syntax

| What | What subject | Verb | To or for whom |
|-------------------------|--|-----------|--|
| Technical assistance | in project management | provided | to regional-government staff (f/m) |
| Trade mission to Canada | on promoting trade and investment in the region | organized | for representatives (f/m) of ministries of X and firms from region Y |
| Training | on how to respond to sexual and other forms of gender-based violence | provided | to field-investigative teams (f/m) |

* *What-Verb-What subject-To or for whom is also accepted*

** *Outputs are objective and should contain no subjective terms (qualifiers)*

*** *Outputs are measured in completeness rather than results*

Logic Model (results chains)

Activity

Can you determine which level of outcome these are based on the syntax?



Improved reproductive health of women in Region Y, Country X



Increased awareness of proper hygiene-practices by women in Region Y, Country X



Enhanced provision of health services to women and men by the ministry of health in Region Y

Logic Model (results chains)

Purpose is to confirm the validity of linkages between outcomes, to assess against new project contexts, and identify implications for other PIP elements.

- Is it Logical?
- Is it complete?
- **Does it still make sense given changes in context?**
- How do considerations from LM review impact other PIP elements?

Are the outputs / outcomes still reasonable?

Are there contextual changes that require additional outputs?

Do the outputs / outcomes require further qualification?

Is the wording still appropriate and reflective of best practice?

Logic Model (results chains)

Purpose is to confirm the validity of linkages between outcomes, to assess against new project contexts, and identify implications for other PIP elements.

- Is it Logical?
- Is it complete?
- Does it still make sense given changes in context?
- **How do considerations from LM review impact other PIP elements?**

What are the assumptions underpinning the logic model?

What risks are associated with those assumptions?

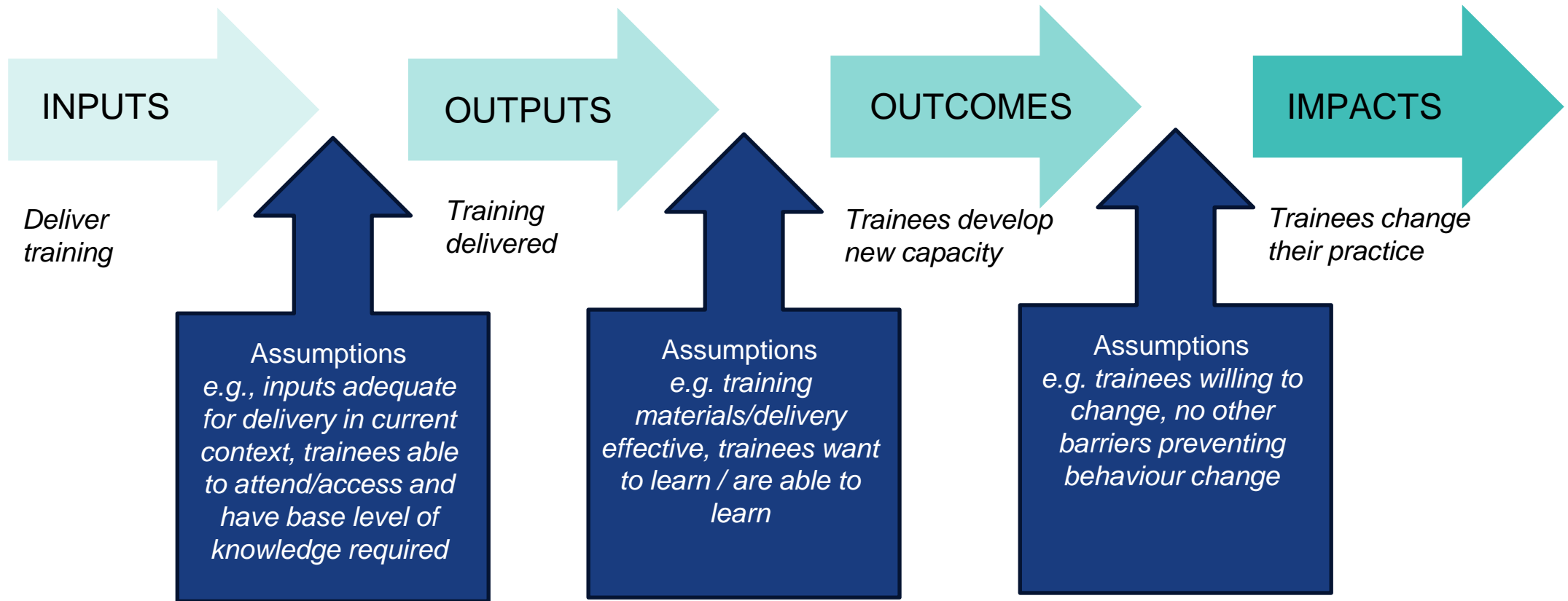
What measures will you need to take to ensure ToC holds true?

How will you monitor the assumptions / risks?

How will you ensure gender equality is considered at all levels?

Logic Model (results chains)

Review
&
Update

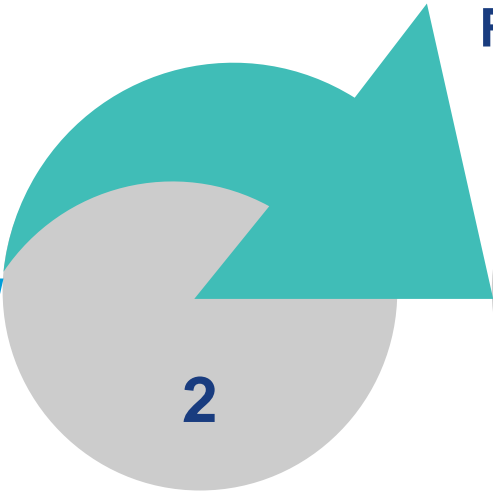


Logic Model (results chains)

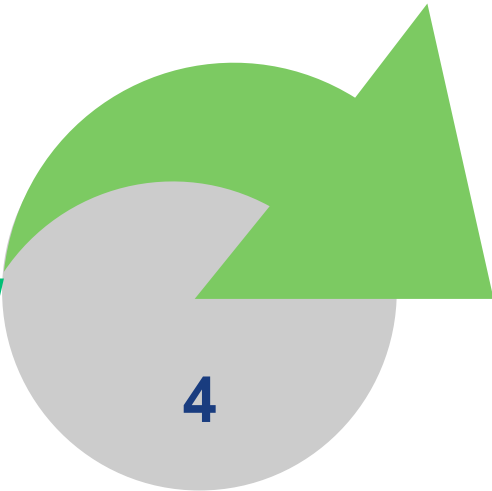
**Implication for activity
workplan/budget**



**Implications for
Risks Management**



**Implications for
Gender Equality and
Social Inclusion
Strategy**



Implications for MEAL

Logic Model (results chains)

Group Results Chain Review –

Choose one of the samples provided or a project from your group

- Chose one results chain (Outputs>Immediate>Intermediate)
- REVIEW: Is it logical? Is it complete? Is the language appropriate for the level of change? Are there qualifiers or concepts needing common definition?
- Identify outcomes that could need to be revisited during PIP review due to changes in context.
- Identify considerations for other PIP elements (e.g., risks)
- Think through considerations/opportunities for advancing GESI, equitable partnerships and localization